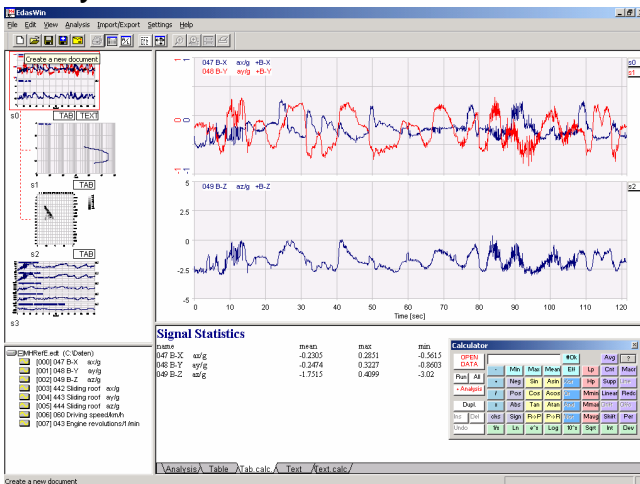


# E.d.a.s.WinPlus

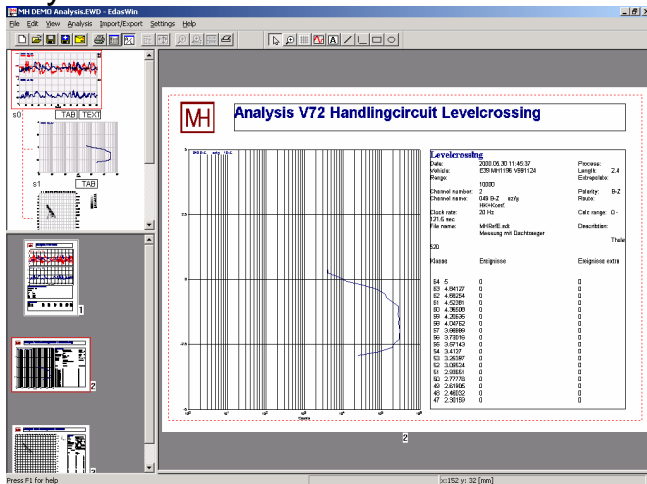


## Analysis View



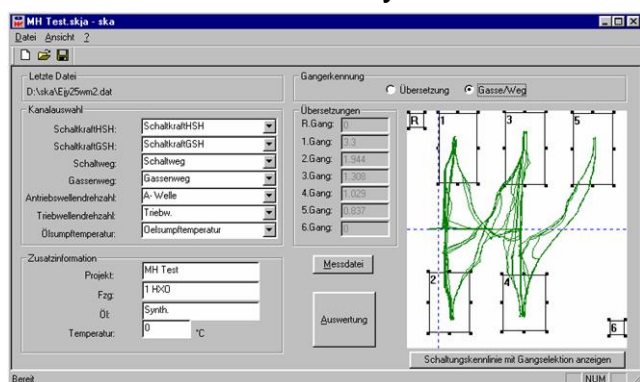
E.d.a.s.Win starts up in the Analysis View. This view provides tools for analysis, calculation and evaluation of test data. The analysis view consists of four windows. The Analysis Window (top right), where the actual analysis results are displayed, the Analysis Instruction Window (bottom right), where all analysis steps are logged, the Channel Selection Window and the Analysis Selection Window (left). The Channel Selection Window displays the channels of the current test dataset. After E.d.a.s.Win has started up all Windows are empty. Clicking on the <Open Data button> on the Analysis Calculator opens a file dialog, where you select the desired data set. A list of the data set channels appears in the Channel Selection Window. Double clicking the channels shows them in the Analysis Window. All signals in the Analysis Window can be processed with Analysis Calculator functions. More complicated functions, which need interaction such as frequency and statistical analysis, FIR Filter, x/y-diagram, etc. will be controlled via Analysis Menu.

## Layout View



The Layout View can be called up at any time and consists of three windows: The Page Window (right) where a whole page is displayed, the Page Selection Window and the Analysis Selection Window (left). An existing analysis can be transferred to the Page Window by drag and drop. The graph can be positioned freely on the page or within a predefined frame. There is no limit to the number of pages that can be created. The pages are selected in the Page Selection Window. Right clicking on the desired page calls up the page in the Page Window. Tools are available for editing, annotating and inserting graphics such as company logos.

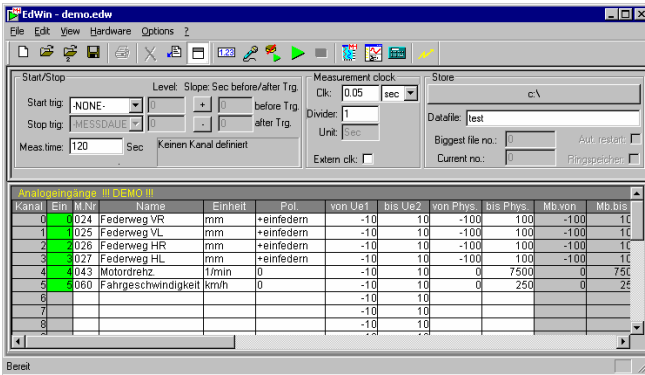
## Automation of the Analysis



E.d.a.s.Win supports the Windows<sup>®</sup> com interface. Using this interface you can control E.d.a.s.WinPlus with a programming language.

On the left side you see an example to analyse forces in a gear box. First the user enters the dialog data. After pressing the start button the application starts EdasWin to show the signals and to search for special events. Then the application zooms the events, sets two cursors and gives control back to the user. Now the user sets the cursors exactly. This will be done with all found events. The results will be transferred to an Excel<sup>®</sup> table.

## Data Acquisition with EDWin



EdWin is a software product for efficient and convenient data-acquisition for Windows 95, 98, ME, NT4, Windows 2000 and XP. The two major functions of EdWin are acquisition and online storage of measured values.

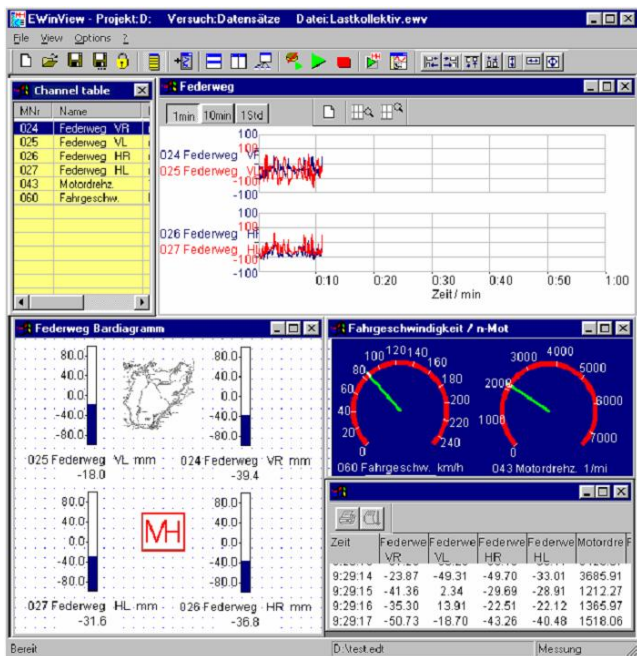
The function recording is used to set the parameters (trigger, time, rate, storage ...) for the measurement. This is done in measurement parameters. The parameters of different measurements can be stored in a file. The filename can be selected by the user.

Without programming work the desired measuring channels are parameterized within a table. The table

can be filled by simply pulling of the desired measuring channel from the measuring point list with the help of an integrated measuring point list or using the keyboard to enter parameter.

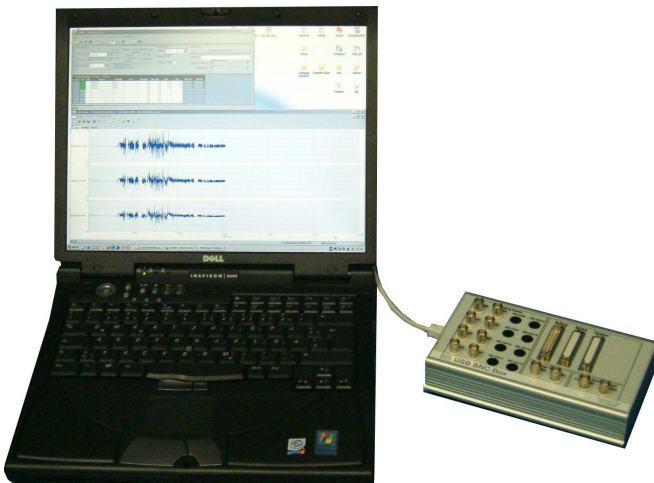
Additionally it is possible to collect voice and video data. The video pictures will be sampled according to the measurement data points. Within the E.d.a.s.Win Analysis the collected signals, voice and video data can be displayed.

## Online Visualization with EWinView



Using EWinView signal data points can be displayed online during data acquisition. No limits of data diagrams, type of diagrams and displayed signals are exist. From the channel list the desired displaying signals will be dropped to the data writer. It is possible to change the display during data acquisition.

## Hardware and Software



E.d.a.s.WinPlus supports a large choice of several data acquisition hardware. An easy to use data acquisition system can be build with a notebook and the MH – USB – Box.

MH – Gesellschaft für  
Hardware/Software mbH  
Schloß Lechenich  
Schlossstraße 18  
D-50374 Erftstadt



Phone +49 2235 6095 Fax +49 2235 6097  
info@mh-gmbh.de www.mh-gmbh.de