

Windows 7 Professional Installation Guide

Installing Drivers

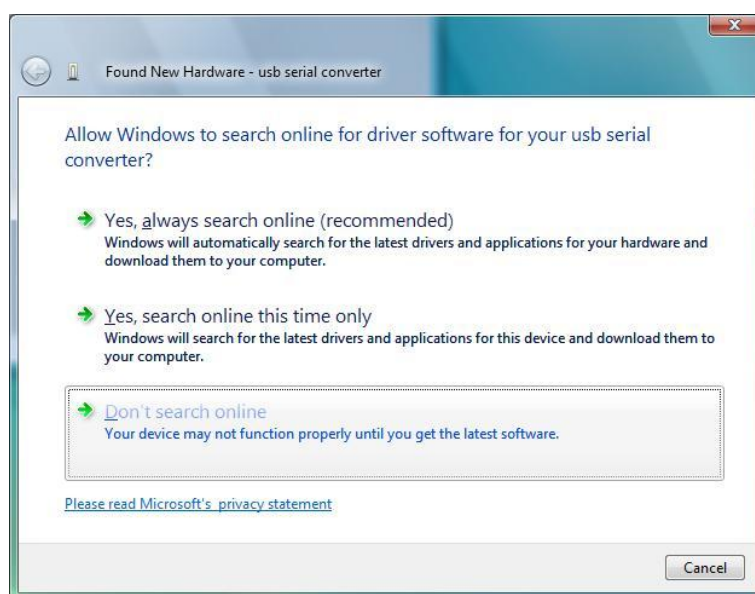
To install drivers for an device under Windows 7, follow the instructions below:

- If a device of the same type has been installed on your machine before and the drivers that are about to be installed are different from those installed already, the original drivers need to be uninstalled.

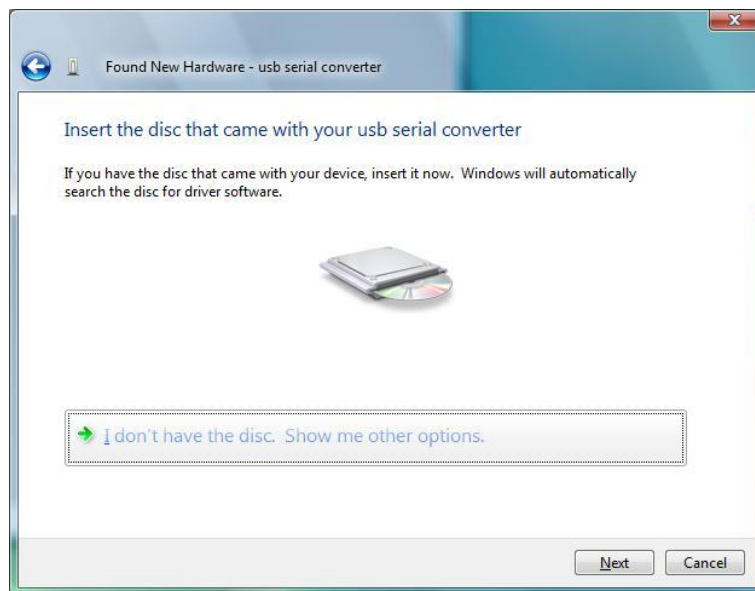
Connect the device to a spare USB port on your PC. This will launch the Windows Found New Hardware Wizard.



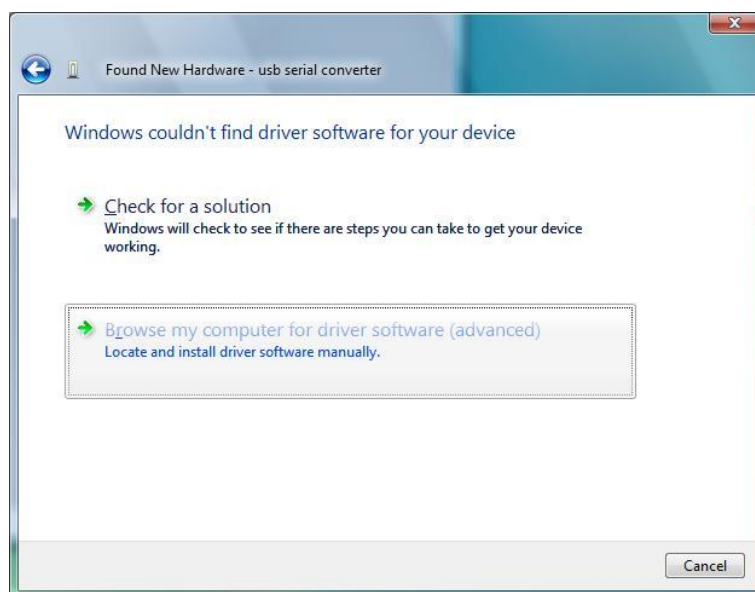
Click "Locate and install driver software (recommended)". The above dialog appears.



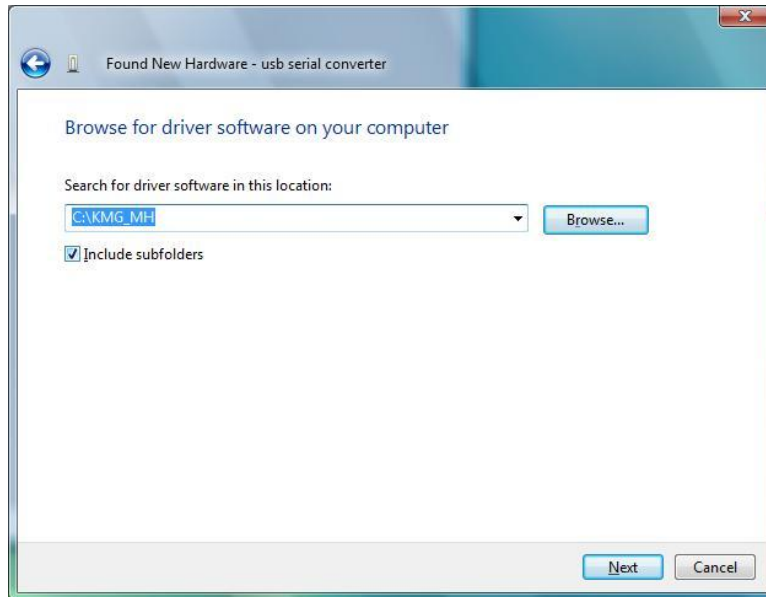
Click "Don't search online". The next dialog appears.



Click the Next button. The above dialog appears.

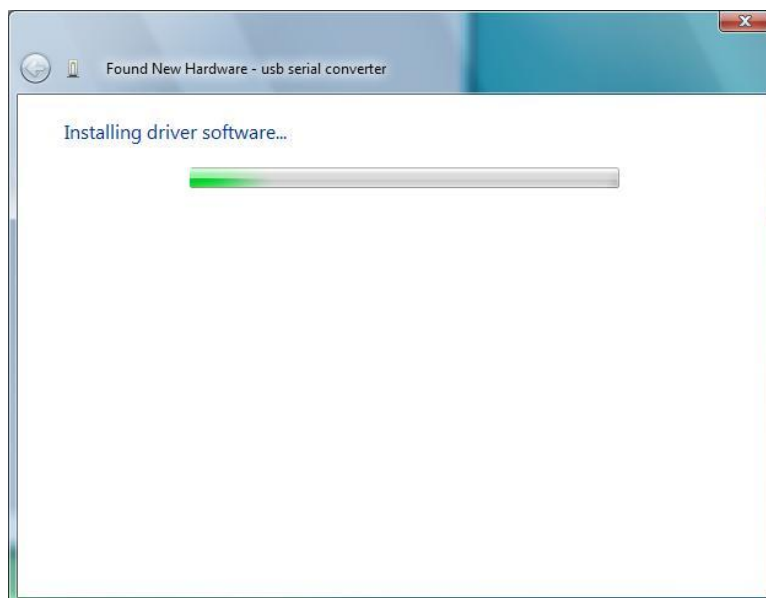


Click "Browse my computer for driver software (advanced)". The next dialog appears.

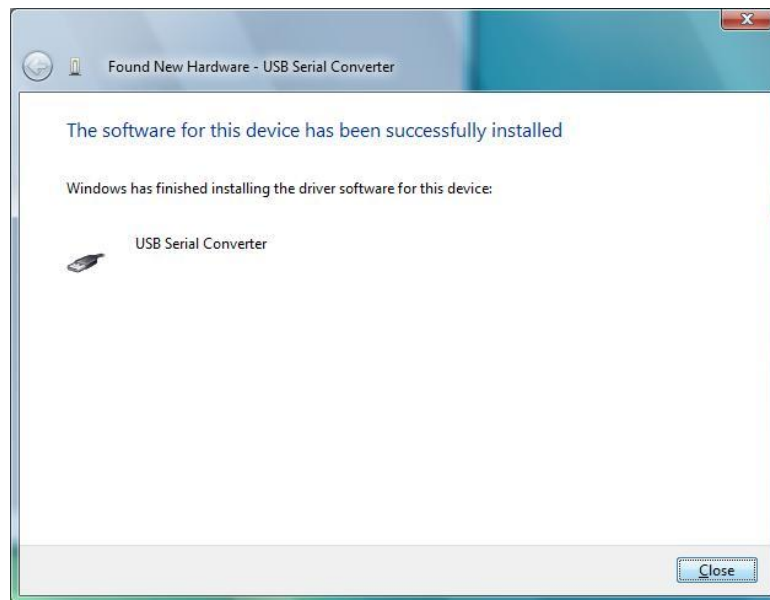


Enter the file path in the combo-box or browse to it by clicking the browse button. Once the file path has been entered in the box, click Next to proceed.

The following screen will be displayed as Windows 7 copies the required driver files.



Windows should then display a message indicating that the installation was successful. Click "Close" to complete the installation. This has installed the serial converter.

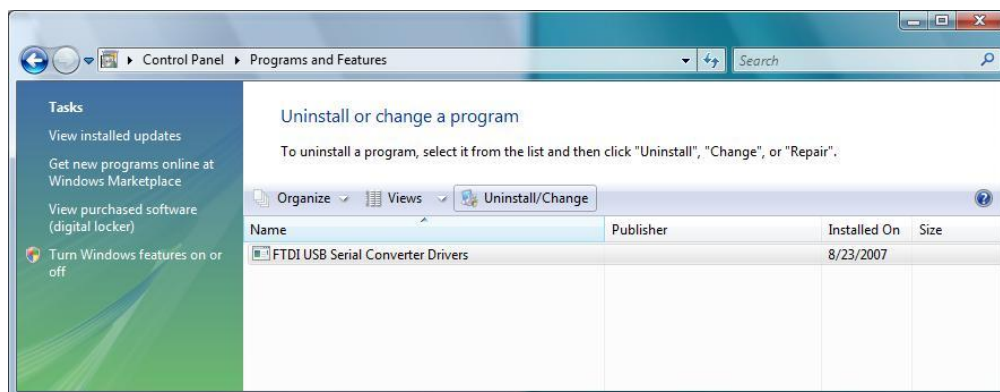


After clicking "Close", the Found New Hardware Wizard will continue by installing the COM port emulation driver. The procedure is the same as that above for installing the serial converter driver.

Uninstalling Drivers

Disconnect any devices that are attached to the PC.

Open the "Programs and Features" utility located in "Control Panel". Select "FTDI USB Serial Converter Drivers" from the list of installed programs.



Click the "Uninstall/Change/" button. Click the continue button if "Windows needs your permission to continue". This will run the uninstaller program.

Click "Continue" to run the uninstaller or "Cancel" to exit.



When the uninstaller has finished removing the device from the system, the caption on the "Cancel" button will change to "Finish". Click "Finish" to complete the process.

