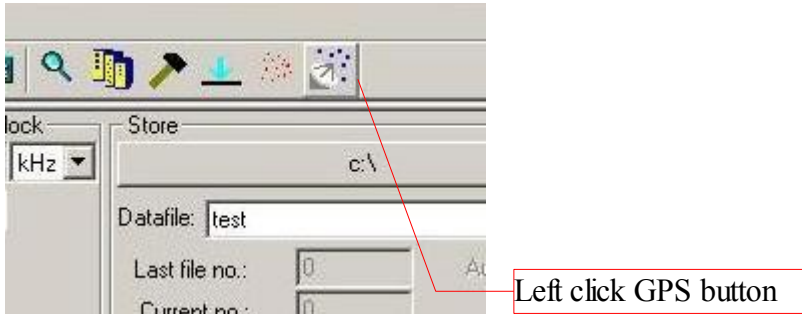


Using GPS Receiver with EdWin

EdWin for DATArec4 modules or MH-USB Box supports GPS receivers with rs232 or USB connection to PC . To activate GPS measurement please press the GPS button in the toolbar.



The GPS Table of channels appears as last table. Here you can select what GPS information is stored in the data stream.

The screenshot shows the EdWin software interface with several tables and a dialog box. The 'GPS' table is highlighted, and a dialog box titled 'GPS Interface' is open over it.

Chan.	On	SLNo.	Name	Unit	Pol.	Label	Range	Input	Coupl.	Input Type	Filter	Clkrate
1		0	DIC_0_0	V			17dBV,7.07Vrms,10Vpeak	Analog	AC	Single	No Filter	1:1
2		1	DIC_0_1	V			17dBV,7.07Vrms,10Vpeak	Analog	AC	Single	No Filter	1:1
3		2	DIC_0_2	V			17dBV,7.07Vrms,10Vpeak	Analog	AC	Single	No Filter	1:1
4		3	DIC_0_3	V			17dBV,7.07Vrms,10Vpeak	Analog	AC	Single	No Filter	1:1
5							17dBV,7.07Vrms,10Vpeak	Analog	AC	Single	No Filter	1:1
6							17dBV,7.07Vrms,10Vpeak	Analog	AC	Single	No Filter	1:1

Chan.	On	SLNo.	Name	Unit	Pol.	Label	Range	Input	Coupl.	Input Type	Filter	Clkrate
1		6	DIC_1_0	V			17dBV,7.07Vrms,10Vpeak	Analog	AC	Single	No Filter	1:1
2		7	DIC_1_1	V			17dBV,7.07Vrms,10Vpeak	Analog	AC	Single	No Filter	1:1
3							17dBV,7.07Vrms,10Vpeak	Analog	AC	Single	No Filter	1:1
4							17dBV,7.07Vrms,10Vpeak	Analog	AC	Single	No Filter	1:1
5							17dBV,7.07Vrms,10Vpeak	Analog	AC	Single	No Filter	1:1
6		11	DIC_1_5	V			17dBV,7.07Vrms,10Vpeak	Analog	AC	Single	No Filter	1:1

Chan.	On	SLNo.	Name	Unit	Clkrate
1		0.00	Latitude	Min*10	
2			Longitude	Min*10	
3			Altitude	m	
4			Speed	m/s	
5			Direction	°	
6			Satelitts		
7			Quality		
8			HDOP		

GPS Interface dialog box settings:

- Interface: COM 8
- Bitrate: 4800
- Databits: 8
- Stopbits: 1
- Parity: none
- Scale of longitude/latitude: Min*100000

Name and unit of GPS channels are fixed. You can only edit the Sensor loaction number.

Measured values are

Latitude:	in Minutes*100000 or in ° with sign.
Longitude	in Minutes*100000 or in ° with sign.
Altitude	Altitude in m above geoid
Speed	Speed in m/sec
Direction	Direction in °
Satelitts	Number of Satelitts
Quality	0=invalid,1=GPS,2=DGPS
HDOP	(Horizontal dilution of precision) Values beetween 1.0 and 99.9 high values are bad , low numbers n'better. A good value is 4.0